



## DATA SHEET



### KEY BENEFITS

#### More Trading Partners Faster

VeriSign Network Routing Directory modernizes the way your company manages interconnects with its trading partners. Dramatically improving the manner in which routing and subscriber information is exchanged between networks. A shared multiparty registry, it provides interconnected networks with a common administration system. Once a network change in one administrative domain is uploaded it is made available to peer networks in near real-time.

#### Infinite Least Cost Routes

Unlike the on-board routing tables of your company's switching systems, the Network Routing Directory imposes no limitation on the number of routes you and your trading partners can have active at any one time.

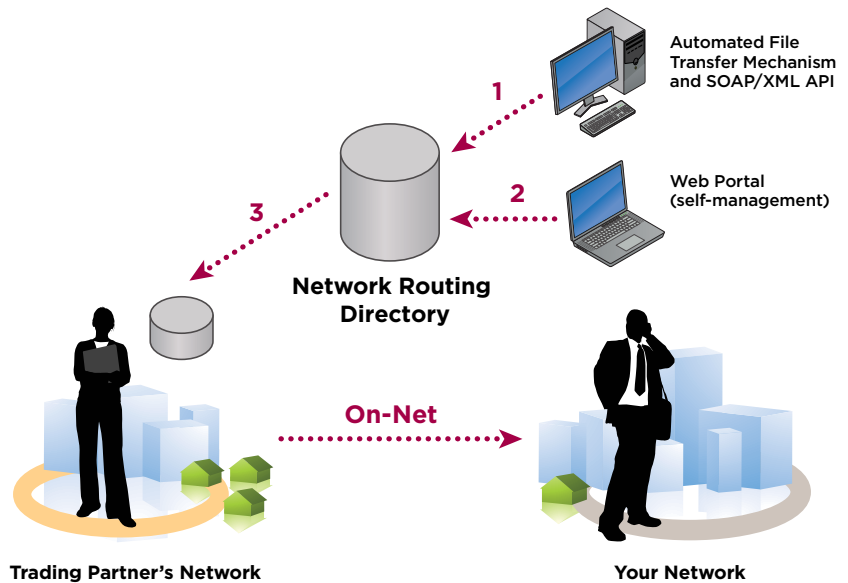
#### Rapid Route Availability

With Network Routing Directory your company and its trading partners are equipped with peered administrative portals through which the process of negotiating least cost routes is linked directly to the exchange of data. Upon acceptance of an offer to use a least cost route, it is made available to the network in near real-time.

## VeriSign® Network Routing Directory

Allow your trading partners to communicate network changes in near real-time to your network and vice-versa. This multiparty registry, designed to expedite the exchange of data between administrative domains, grants your company and its trading partners the ability to establish a central repository, from which data critical to the completion of inter-network calls is downloaded. The diagram below illustrates the VeriSign Network Routing Directory framework that empowers your company and its trading partners with direct command of data caches that each queries to discover points-of-interconnect and subscriber information such as calling name.

Figure 1: VeriSign Network Routing Directory Framework



1. Your company provides bulk upload of its data to the registry via bulk upload file or SOAP/XML data transfer mechanism.
2. In practice, your company uses the registry's self-management web portal to selectively grant data access to trading partners.
3. When a trading partner accepts your offer to peer their cache (against which lookups are performed) is updated.



**KEY BENEFITS (CONTINUED)**

*Accurate Call Completion*

Your company and its trading partners utilize the registry to push numbering updates directly to each other's networks, which produces a verifiable increase in calls terminating to the proper location, routed in the least-cost fashion

*Safeguard Data*

With the Network Routing Directory your company's data is disseminated and protected appropriately. Using our secure portal, you self-administer your company's data-sharing policies selectively granting access to your company's data in whole or part.

*Origin Dependent Data Sharing*

The sharing of routing and subscriber information can optionally be made sensitive to interconnects, which allows your company to manage things such as traffic flows to and from its network. This includes your ability to browse routes a peer has exposed to your company and map them to points-of-egress from your network.

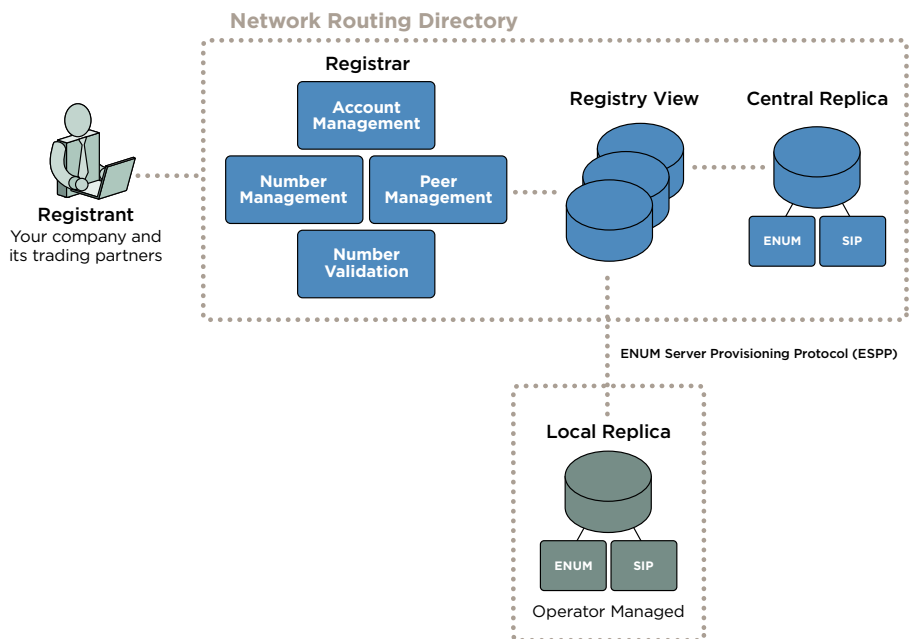
**+ Service Bureau: Central Replica**

To eliminate cost and complexity of establishing your own systems, VeriSign makes available a central replica. Through a secure SIP or ENUM lookup, your network can access geographically redundant resolution systems that are designed to support a service level target of 99.999%.

**+ Open Standards: Local Replica**

The VeriSign registry supports an open multi-vendor environment. Your company can instruct the registry to use the PacketCable ENUM Server Provisioning Protocol (ESPP) to replicate data to a compliant third party platform located in your network.

Figure 2: Local Replica



**+ About VeriSign**

We can ease your transition to IP with TCAP-to-SIP conversion, and support for ENUM. We're a single source for advanced services such as number portability and calling name, so you can offer competitive services with the convenience of one trusted provider.

**+ Learn More**

For more information about VeriSign® Network Routing Directory, please email: [commsales@VeriSign.com](mailto:commsales@VeriSign.com).

**Visit us at [www.VeriSign.com](http://www.VeriSign.com) for more information.**