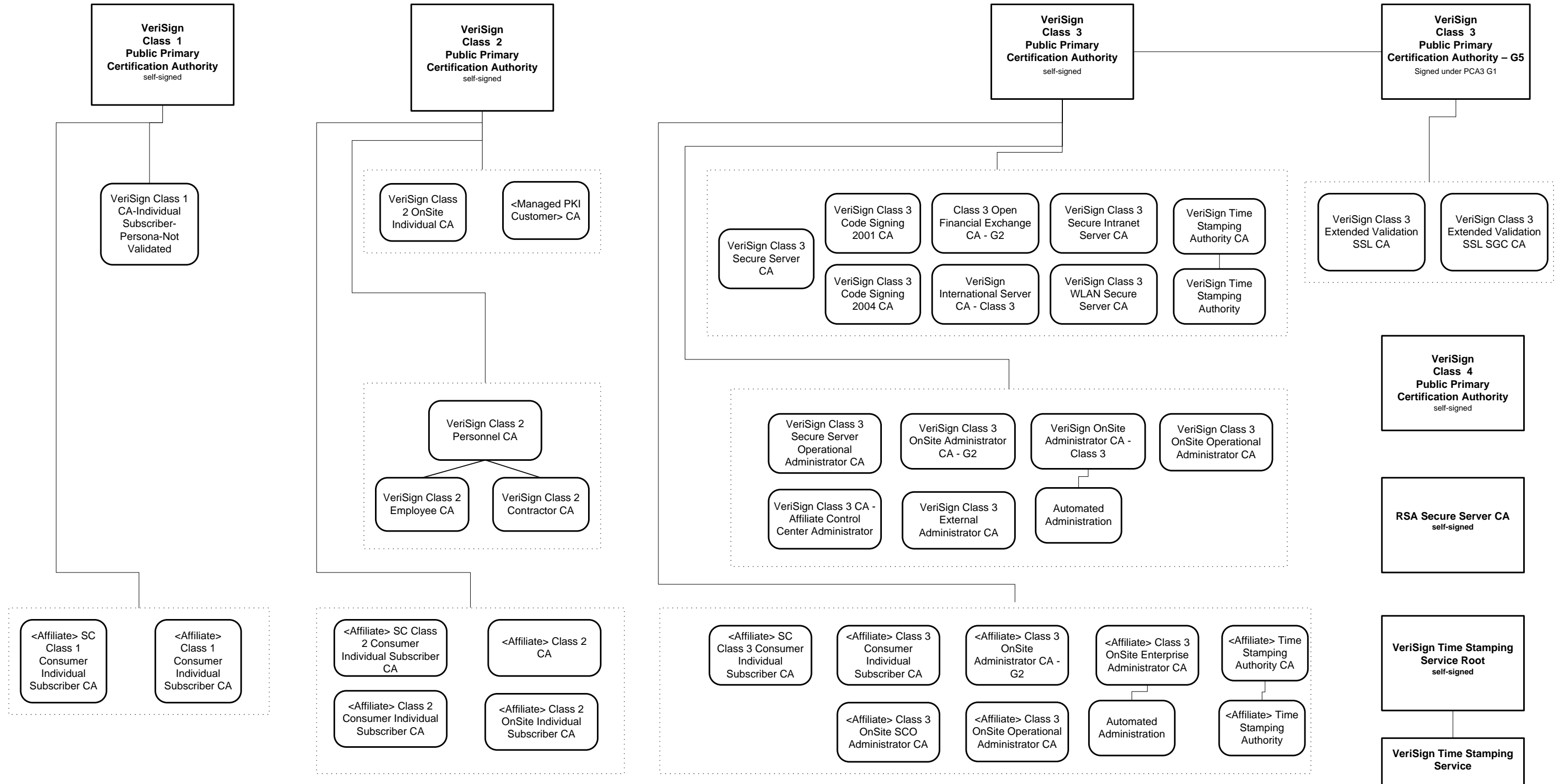


VeriSign Trust Network (VTN) Key Hierarchy



Subject Distinguished Name Format:

O = <Company Full Name> (VeriSign, Affiliate, or Managed PKI customer)
 OU = VeriSign Trust Network
 OU = Terms of use at <https://www.verisign.com/rpa> (c)03
 CN= {name, class, service, role} (i.e {VeriSign} {Class 2} {OnSite} {Individual Subscriber} {CA})